

Customer :

customer

Customer part :

customer part

Comment :

Comment

S1=2.79

S2=4.06

Tmax=463

Tp S2=502.0

PI=0.41

HI=131

Sample =1670.60

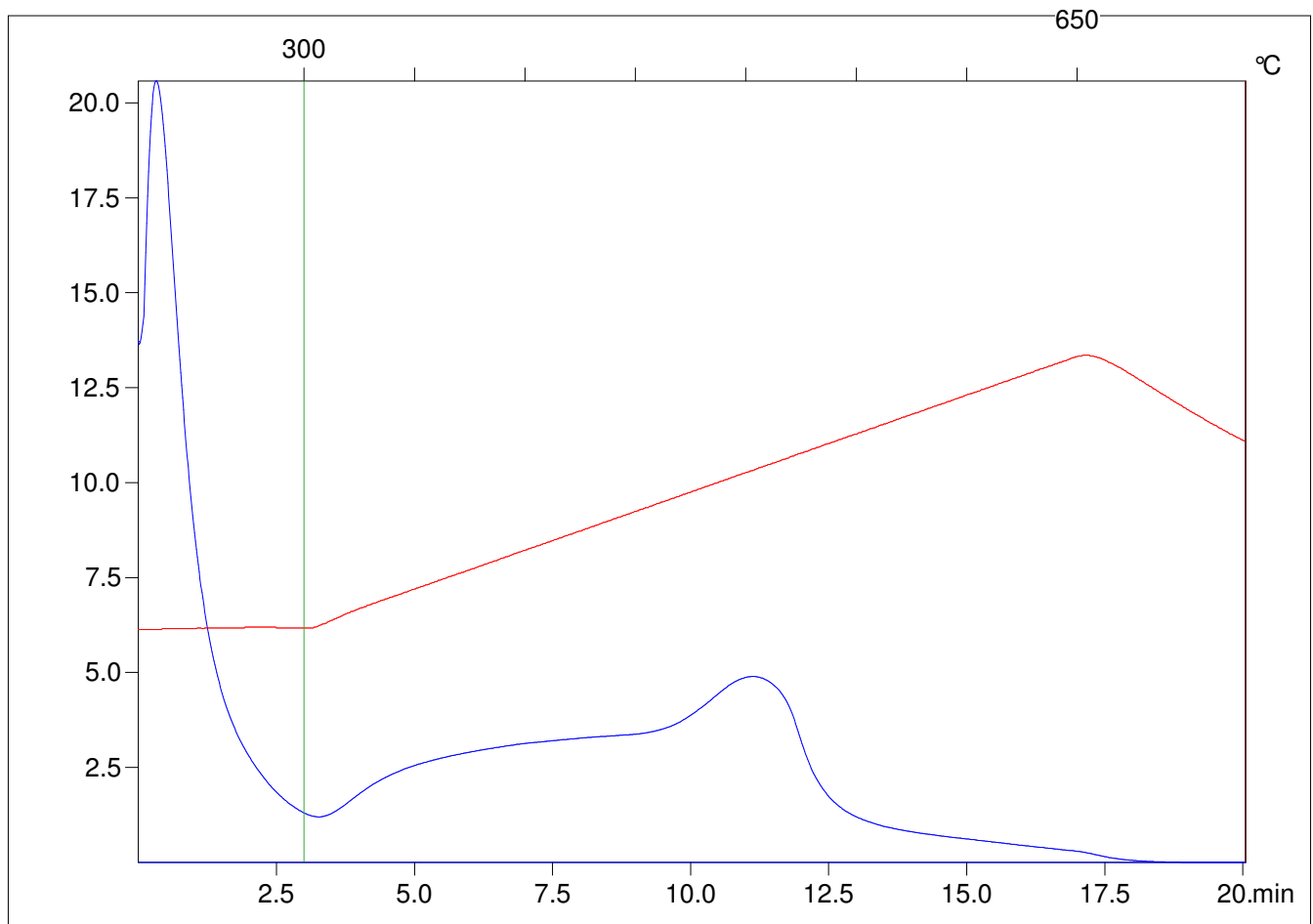
Method =Bulk Rock

Cycle=Basic

KFID(10*9)=1444

Qty =70.3

TOC=3.11



C:\VINC\PK1_1792\PK013.R00 : FID pyrolysis graphic

State

Pyro Status

Oxi Status